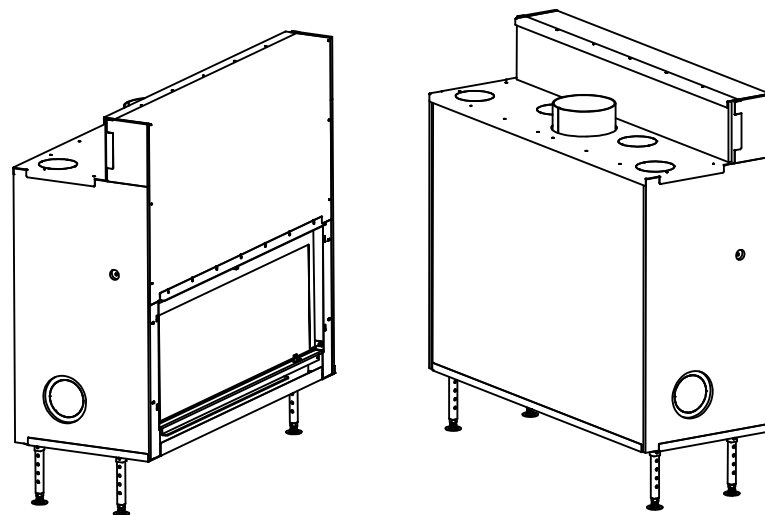
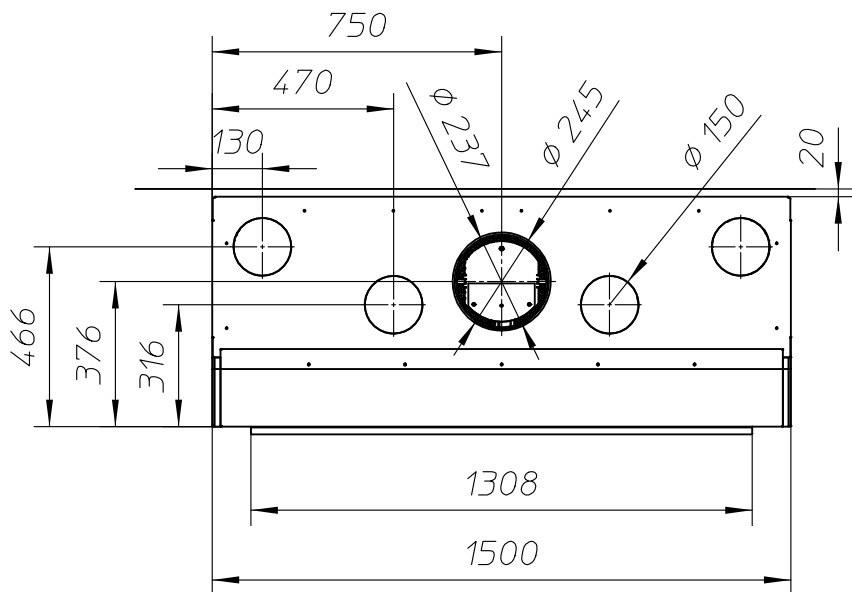
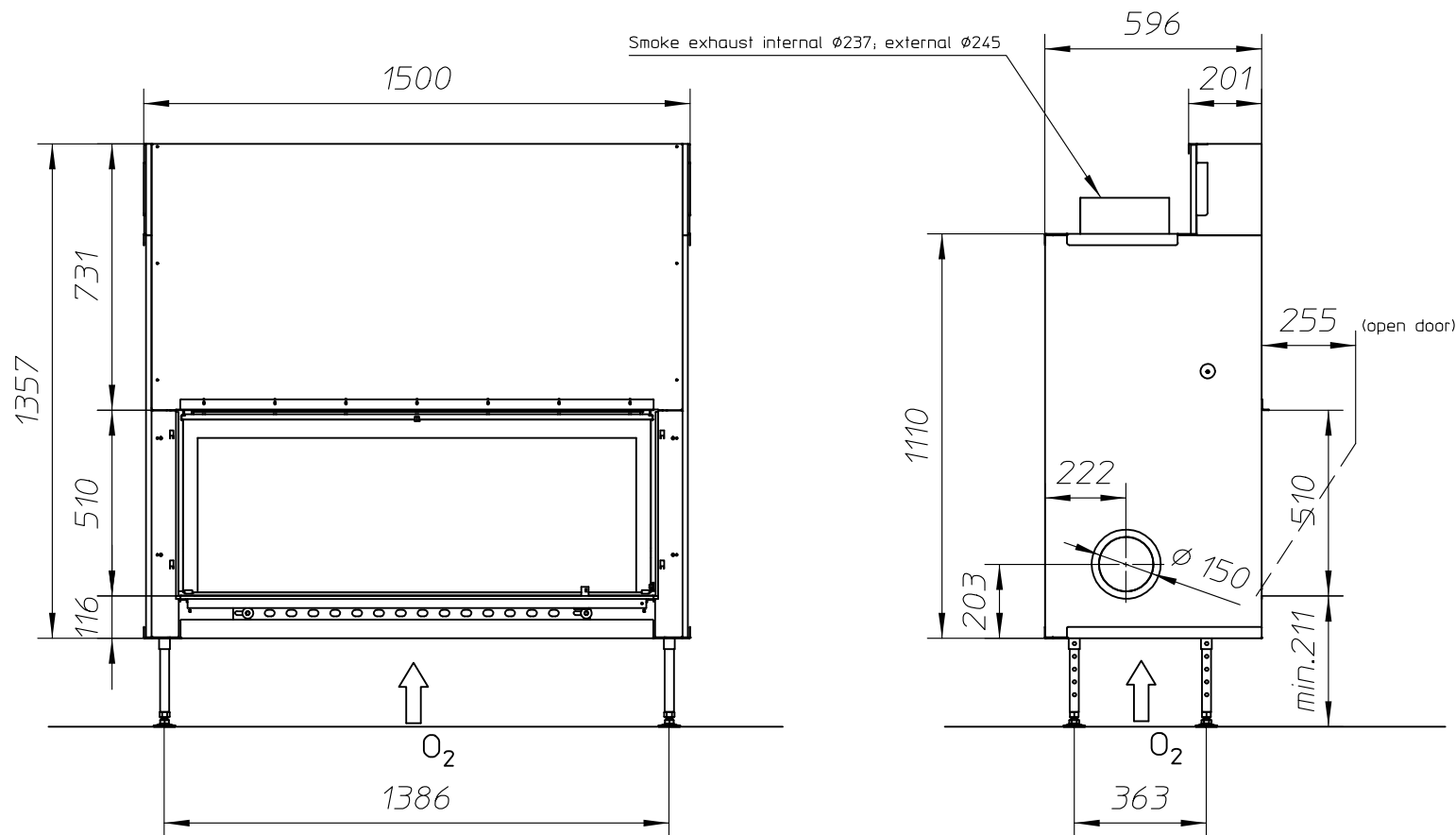


Smoke exhaust internal Ø237; external Ø245



Scale 1:30

ULTIME C Patented

metalfire

Technical Document

Model: ULTIME C MF 1300-50 WHE 1S

Dimensions (mm)

- combustion opening WxH: 1308 x 510
- glass door WxH: 1284 x 484
- external WxDxH: 1500 x 596 x 1360
- stoke grate WxD: 800 x 370
- fresh air: 1 x Ø150
- diameter flue: Ø245

Technical Data

- capacity: 27 kW
- efficiency capacity: 77,6 %
- CO (volume with 13%O₂): 0,1 %
- dust (volume with 13%O₂): 26 mg/Nm³
- weight: 433 kg
- min. insulation thickness:
 - topside (mm): 93
 - bottomside (mm): 10
 - rearside (mm): 169
 - side (mm): 116
- Air intake to convection : min. 350 cm (2xØ150)
- Air exhaust from convection : min. 700 cm (4xØ150)

Specifications

- inside finishing: heat-resistant black paint
- automatic valve for smoke gases
- sliding door in heat-resistant glass
- cast iron stoke grate

First aid and technical support:

- support@metalfire.eu
- +32 (0)9 261 50 57

scale 1:20

www.metalfire.eu EN 13229

General dimensional tolerances up to 6mm
Metalfire preserves the right to modify specifications without previous notice

Rev.
-

CE

Sheet
1/4

WITH FINISHING FRAME 90/10

ULTIME C_{Patented}

metalfire

Technical Document

Model: ULTIME C MF 1300-50 WHE 1S

Dimensions (mm)

- combustion opening WxH: 1308 x 510
- glass door WxH: 1284 x 484
- external WxDxH: 1500 x 596 x 1360
- stoke grate WxD: 800 x 370
- fresh air: 1 x Ø150
- diameter flue: Ø245

Technical Data

- capacity: 27 kW
- efficiency capacity: 77,6 %
- CO (volume with 13%O₂): 0.1 %
- dust (volume with 13%O₂): 26 mg/Nm³
- weight: 433 kg

First aid and technical support:

- support@metalfire.eu
- +32 (0)9 261 50 57

scale 1:20

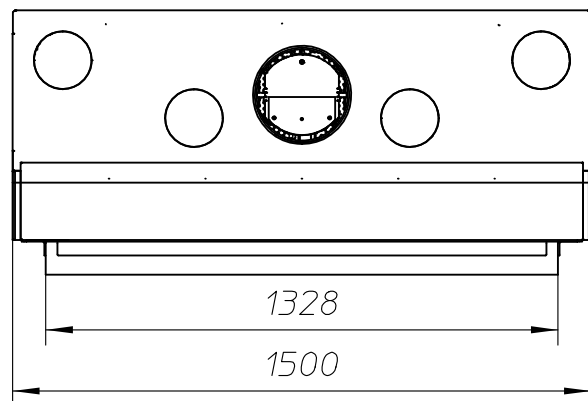
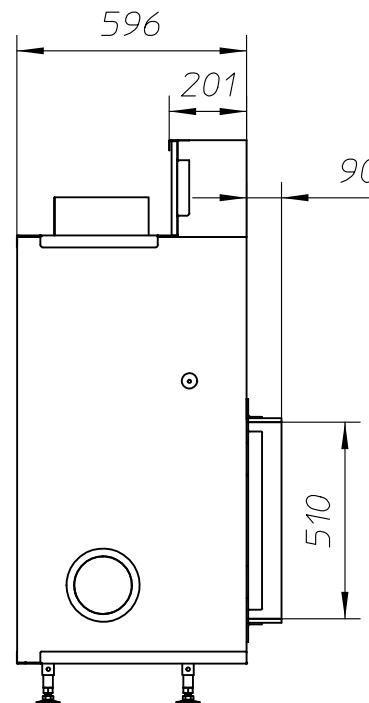
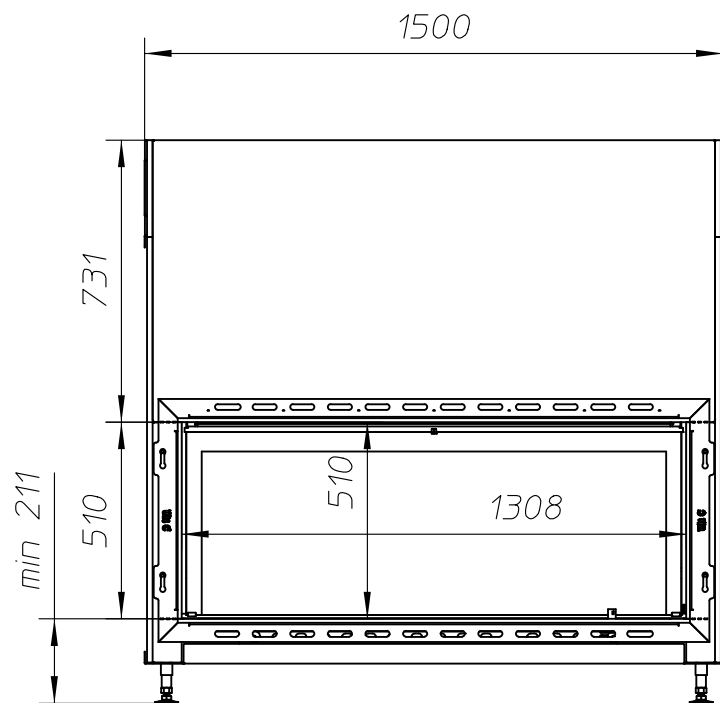
Rev.
-

www.metalfire.eu EN 13229

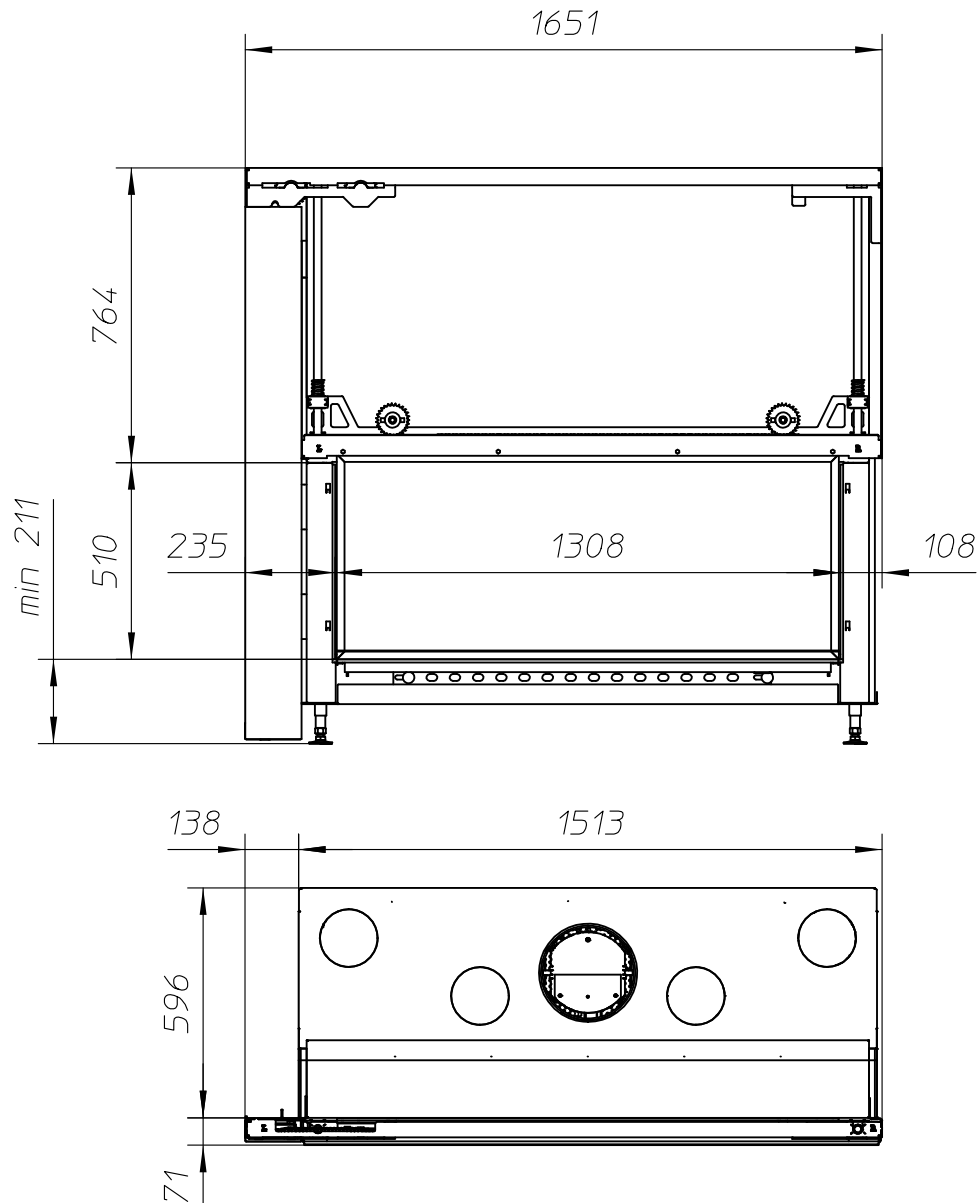
CE

General dimensional tolerances up to 6mm
Metalfire preserves the right to modify specifications without previous notice

Sheet
2/4



WITH FIRESCREEN - NO FINISHING FRAME



ULTIME C Patented

metalfire

Technical Document

Model: ULTIME C MF 1300-50 WHE 1S

Dimensions (mm)

- combustion opening WxH: 1308 x 510
- glass door WxH: 1284 x 484
- external WxDxH: 1651 x 667 x 1360
- stoke grate WxD: 800 x 370
- fresh air: 1 x $\varnothing 150$
- diameter flue: $\varnothing 250$

Technical Data

- capacity: 27 kW
- efficiency capacity: 77,6 %
- CO (volume with 13%O₂): 0,1 %
- dust (volume with 13%O₂): 26 mg/Nm³
- weight: 433 kg

First aid and technical support:

- support@metalfire.eu
- +32 (0)9 261 50 57

scale 1:20

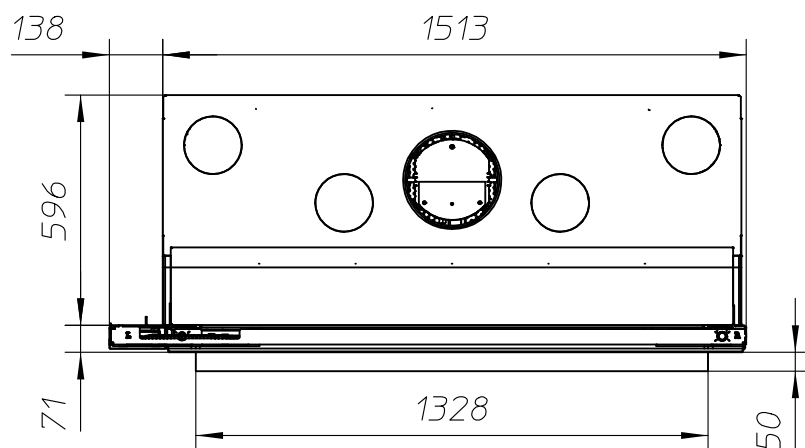
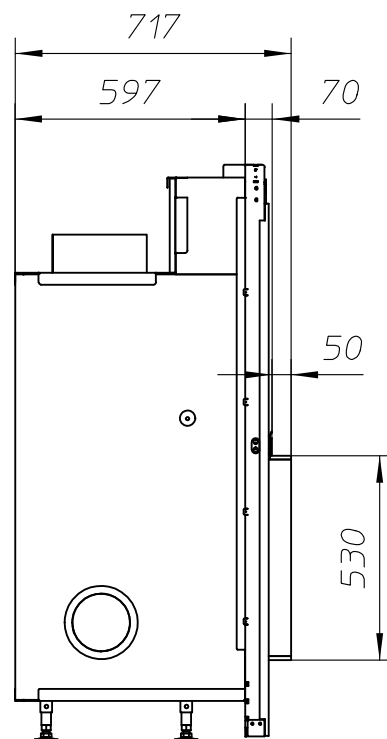
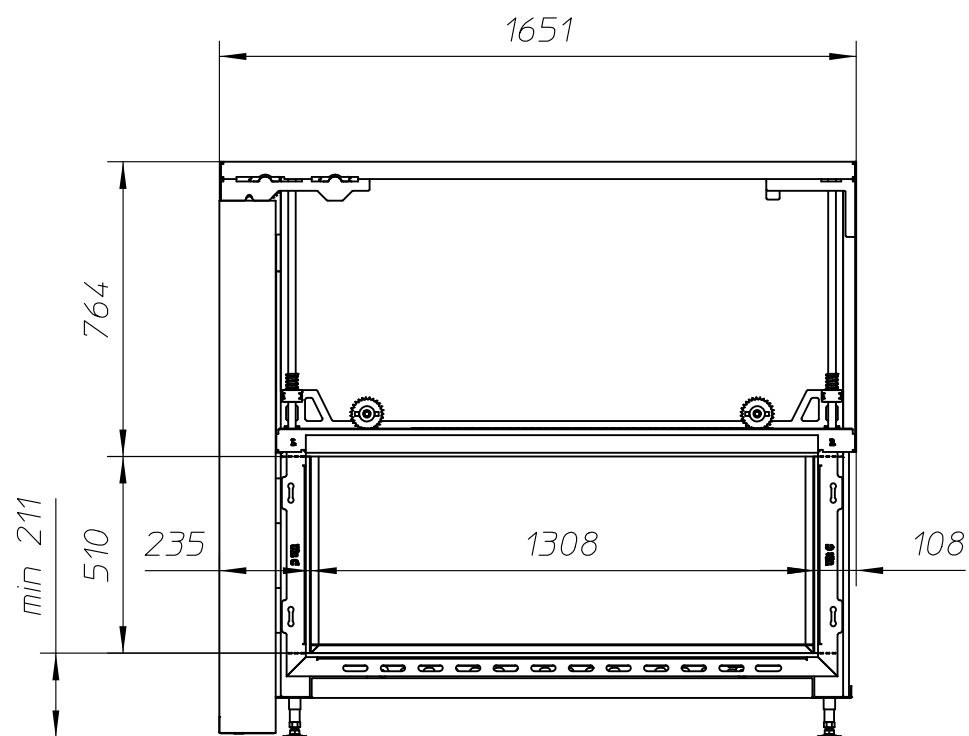
Rev.
-

www.metalfire.eu EN 13229

CE

General dimensional tolerances up to 6mm
Metalfire preserves the right to modify specifications without previous notice

Sheet
3/4



ULTIME C Patented

metalfire

Technical Document

Model: ULTIME C MF 1300-50 WHE 1S

Dimensions (mm)

- combustion opening WxH: 1305 x 510
- glass door WxH: 1284 x 484
- external WxDxH: 1651 x 717 x 1360
- stoke grate WxD: 800 x 370
- fresh air: 1 x $\phi 150$
- diameter flue: $\phi 250$

Technical Data

- capacity: 27 kW
- efficiency capacity: 77,6 %
- CO (volume with 13%O₂): 0,1 %
- dust (volume with 13%O₂): 26 mg/Nm³
- weight: 433 kg

First aid and technical support:

- support@metalfire.eu
- +32 (0)9 261 50 57

scale 1:20

Rev.
-

www.metalfire.eu EN 13229

CE

General dimensional tolerances up to 6mm
Metalfire preserves the right to modify specifications without previous notice

Sheet
4/4